

ABX 安必信
ANBIXIN

ABX

工业门与装卸货系统
Industrial Door & Docking Systems

追求卓越 缔造完美
安必信为客户提供一流的产品与服务
“Best Product Best Service”

江苏安必信物联网科技有限公司

Jiangsu Anbixin Internet of Things Technology Co. LTD

地址：无锡东港经济开发区
国内销售电话：0516-89888 771
国内服务电话：400-100-8078
网址：www.abx1688.com

Address: Dong Gang Economic Development Zone Wuxi City
Jiangsu Province, China

Domestic Sale Tel: 0086-516-89888 771
Domestic Service Tel: 400-100-8078
Website: www.abx1688.com



追求卓越 缔造完美
安必信为客户提供一流的产品与服务
"Best Product Best Service"

02/	安必信 ANBIXIN
03-04/	生产制造 MANUFACTURING
05/	资质荣誉 QUALIFICATION& HONOR
06/	解决方案 SOLUTIONS
07-12/	ZSM工业滑升门 ZSM INDUSTRIAL SECTIONAL DOOR
13-15/	涡轮硬质快速门 DOCKING SYSTEMS
16-18/	KJM快速软帘卷门 KJM HIGH SPEED DOOR
19-20/	SDM软帘上叠门 SDM UPPER FOLDING DOOR WITH SOFT CURTAIN
21-22/	装卸货系统 DOCKING SYSTEMS
23-24/	TLM推拉门 TLM INDUSTRIAL SLIDING DOOR
25-26/	抗风卷帘门 WINDPROOF ROLLING SHUTTER
27-28/	CZM侧转门 CZM SIDE REVOLVING DOOR
29-30/	飞机库大门 HANGAR DOOR
31/	低温快速门 LOW TEMPERATURE FAST DOOR
32/	销售网络 SALES NETWORK

"安必信"-工业门及装卸货系统的专业解决方案供应商。针对工业、物流、航空航天、公用事业等不同行业客户的物流关口的通行需求，都能提供专业的解决方案；除了致力于满足客户安全、高效、舒适而节能的通行需求，还通过专业的服务团队与客户建立共同的价值观，从而带给客户持续满意的通行体验。公司总部坐落在江苏省无锡市锡山区，厂房占地面积3万平方米，建筑面积2万平方米，具备强大的设计、研发和生产能力，参加过建设部《工业滑升门》、《飞机库大门》等国家标准的编写工作。公司拥有符合欧盟标准的进口全自动门板生产线、墙体保温板系列自动生产线、77、100系列卷帘门自动生产线。公司能生产工业滑升门、装卸货系统、快速卷帘门、车库门、飞机库大门、柔性上叠门、推拉门等多种产品，并通过了CE认证和ISO9001-2000国际质量体系认证。二十余年来，伴随着激烈的市场竞争，始终把握客户和市场的需求，不断提升产品质量，不断推出新产品，不断壮大服务团队，以精湛的产品质量和强大的供货能力为保障，与欧洲、美洲、东南亚、非洲等三十多个国家的客户建立了长期供货关系，凭借专业的服务能力和完善的人才培养机制，在北京、上海、沈阳、郑州、西安、重庆、武汉、广州等各大城市都建立了销售网点和技术及售后服务团队，持续致力于带给客户完美的通行体验。

"ANBIXIN DOOR"-professional solution supplier of industrial doors as well as loading and unloading systems is capable to provide professional solutions for the passing demands for logistics gate of customers in different industries such as industry logistics, aviation and public utilities; in addition to devoting itself to meeting the customer demands for safe, efficient, comfortable and energy saving passing, establishes mutual view of value with the broad customers with its professional, service team so as to enable the customers to enjoy continuous and satisfactory passing experience. The Headquarters of the company is located in Xishan District, Wuxi, Jiangsu, China. The plant covers an area of 30,000 square meters including building area of 20,000 square meters. company has strong capability in designing, research & development and strong production capacity are strength of company. In the past, the firm occupied an important role in the formulation of national standards for Ministry of Construction such as Industrial Sliding Doors, Door of Hangar. What's more, it owns an automatic production line of European environmental protection foaming door panel, an automatic production line of wall insulation board series and an automatic production line of 77 & 100 series rolling door. So the company is capable to manufacture multiple products industrial sectional door, docking systems, high speed door, garage door, hangar door, flexible upper folding door and industrial sliding door. The products have passed CE certification and ISO9001-2000 International Quality System Certification. Over the past over twenty years, with the intense market competition, always insists on promotion of the product quality, launching of new products and strengthening of its service team on the basis of grasping the demands of the customers as well as the market. With the guarantee of its exquisite product quality and powerful supply capability, industry has established the long-term supply relation with customers from over 30 countries in Europe, America, Southeast Asia, Africa and so forth. In order to continuously devote itself to providing the customers with perfect passing experience, industry establishes its sales branches, technology team and after-sale service team in such major cities as Beijing, Shanghai, Shenyang, Zhengzhou, Xi'an, Chongqing, Wuhan and Guangzhou by virtue of its professional service ability and perfect talent cultivation mechanism.



生产制造

MANUFACTURING

先进的生产设备
科学的生产管理
造就产品的卓越品质

Advanced Production Equipment
Scientific Production Management
Contributing to Excellent Quality of Products

安必信门业率先引进国际先进的门板连续生产线，经过上料、滚压、发泡、切割等环节，确保了门板的强度、平整度和美观性，使得门板的整体工艺及质量达到世界领先水平。

Anbixin door industry took the lead in introducing the international advanced continuous production line of door panels. After feeding, rolling, foaming, cutting and other links, it ensured the strength, flatness and aesthetics of door panels, making the overall process and quality of door panels reach the world advanced level.



资质荣誉

DUALIFICATION&HONOR



解决方案

SOLUTIONS

需求咨询
Consultation
方案提供
Solusion
安装与售后服务
Installatlon and Service



安必信门业遍布全国各大中城市的销售、安装及服务团队，始终专注于客户需求，针对客户不同场合的通行需要，提供并实施专业的解决方案，持续致力于带给客户完美的通行体验。

With sales, installation and service teams in large and medium-sized cities all over the country, AnBiXin door industry always focuses on customer needs, provides and implements professional solutions for customers' access needs on different occasions, and continues to be committed to bringing customers a perfect access experience.

Concentrate
专注



Customer
客户

Commitment
承诺

ZSM工业滑升门 (图标图集号03J611-4)

ZSM INDUSTRIAL SECTIONAL DOOR

工业滑升门由门体、平衡系统、驱动及控制系统、安全装置、轨道和密封以及其他选配(小门、窗户等等)组成,其原理是靠平衡系统实现随动平衡,靠外力(手动或电动)驱动门体运行于适合开启的轨道系统,操作轻便,具备良好的保温与密封性,适用于各类型的有较高的保温密封与美观要求的厂房、物流仓库或特种车库。

The industrial sliding door is composed of door body, balance system, drive and control system, safety device, track and seal and other options (small door, window, etc.). Its principle is to realize follow-up balance by the balance system, and drive the door body by external force (manual or electric) to run in the track system suitable for opening. It has light operation and good thermal insulation and sealing. It is applicable to all types of plants, logistics warehouses or special garages with high requirements for thermal insulation, sealing and beauty.

主要技术参数

MAIN TECHNICAL PARAMETERS

适用门洞	Applicable door opening
最大门洞宽 B=9000	Maximum door opening width B = 9000
最大门洞高 A=8000	Maximum door opening height A = 8000
工作电压/频率	Working voltage/frequency
380V/50HZ	
电机功率	Motor power
180W-380W	
开门速度	Opening speed
≥0.2m/s	
门体最大抗风压	Maximum resistance to wind pressure of door body
450N/m ²	带抗风加强筋, 抗风压650N/m ²
	With windproof reinforcement having resistance to wind pressure 650N/m ² in resistance to wind pressure
门框厚	Thickness of door panel
40mm-50mm	
传热系数	Heat transfer coefficient
K≤0.8W/m ² ·K	
隔音性能	Sound insulation property
23db	

更多详细技术参数请咨询销售人员

三种主要提升方式

Three major lift ways



小门视窗选择

Selection of window and window



ABX/1		标准提升 适用于门楣高度为450/530mm的门洞,是工业厂房门的标准提升方式	ABX/2		高位提升 适用于门楣高度大于630mm的门洞,使门楣高度得到最大的释放
ABX/3		垂直提升 适用于门楣高度大于H+800mm的门洞,适合大的厂房门或特殊要求	ABX/4		扭臂后置 适用于门楣高度很小的情况
ABX/5		低位提升 适用于门楣高度为365/400mm的门洞	特殊形式		特殊提升 适用于屋顶倾斜或在安装门范围内存在阻碍的情况

(*H=门洞高; h=门楣高; Hn=净可通过高度)



开卷机 Uncoiler



Cross cutter 锯切机



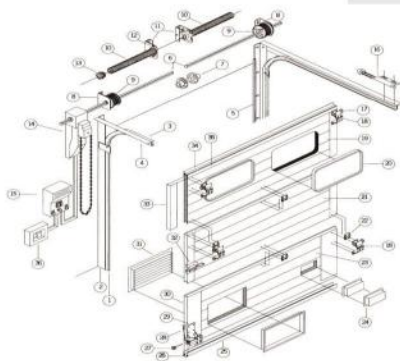
压型机 Profiling



双履带成型机 Contimat



板材成品 Panel



门体 Portal body

由若干块门板通过合页、滑轮座、滑轮相互连接在一起，组成门板整体结构；
 Several door panels are connected with each other through hinges, pulley seats and pulleys.

轨道 Track

由导轨、副轨、固定件等构件组成，引导门体定向运行的组件。
 It is composed of guide rail, auxiliary rail, fixings and other components to guide the doorBody oriented components.

平衡系统 Balance system

由扭簧、钢丝绳、滑轮、扭簧轴、支撑架等构件组成，起平衡门体作用的组件。
 It is composed of torsion spring, steel wire rope, tower wheel, torsion spring shaft, support frame and other components, which plays the role of balancing the door body.

电控系统 Electric control system

电子限位交流电机、智能物联网集中控制箱。
 Electronic limit AC motor, intelligent Internet of things centralized control box.



开门机
~220V
~380V
Motor



安全气囊系统
安全可靠
With safe and reliable safety
air bag system



防弹簧断裂装置
在弹簧断裂时,防止门体坠落,
安全性好
Spring break device
To prevent falling of the door body
in the event of broken spring,with
good safety performance



钢丝绳断裂保护装置
在钢丝绳断裂时,卡阻轨道,门体不
下垂
Cable break device
The rail is
jammed and the door body
does not fall in the event of
broken wire rope



铝合金绳轮
强度高,使用寿命长
Aluminum alloy rope pulley
With high strength and long
service life



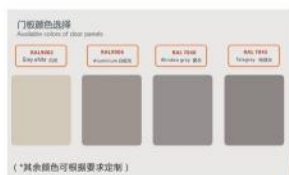
加强型轴支架
承载能力强,使用寿命长
Enhanced shaft bracket
With strong bearing ability and
long service life



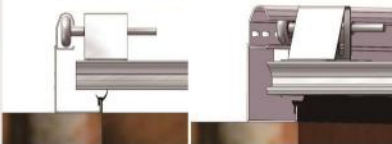
控制箱
操作简便,安全可靠
Control box
Handy operating,safe and reliable



双联加强型导轮架
确保门体强度和抗风性能
Duplex enhanced guide wheel
bracket To ensure the strength
and the windproof property of
door body



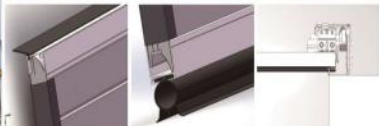
软硬共挤密封胶条
Soft and hard extrusion sealant strip



全方位密封 Omnidirectional seal



- 通过底部密封条、侧部密封条、顶部密封条、门板间内置密封条使整框门的密封性能达到最高水平。
- Through the bottom sealing strip, side sealing strip, top sealing strip and built-in sealing strip between door panels, the sealing performance of the whole door can reach the highest level.
- 除内置板间密封条外,其余密封均采用优质的EPDM密封材料。
- Except for the built-in sealing strip between plates, other seals are made of high-quality EPDM sealing materials.



涡轮硬质快速门

DOCKING SYSTEMS

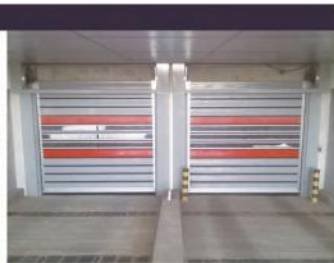
涡轮硬质快速门—集保温、节能、密封、高效、抗风、环保于一身的新型金属工业门，开启速度每秒最高可达2.5米，适用于室内外需要频繁高速通行的物流通道。门板采用0.7mm厚双层拉伸铝板经流水线一次复合成型，中间为聚氨酯发泡填充，每立方容重>50kg(不含CFC)，门板总厚度为43mm，截面设计为断桥隔热结构，具有保温好，重量轻、强度高、抗冲击等特点，抗风等级可达12级。该门型能为企业减少大量因空气流通而产生的能量损耗。驱动控制采用了稳定、节能的伺服系统来保障门体的可靠运行。

Metal Rapid Rolling Door, as a new type metal industrial door, has insulation, energy-saving, sealed, highly efficient, wind resistance, and environmental features all well combined in it. Due to its maximum opening speed of 2.5 m per second, it can be applied to logistics channels requiring high speed and frequency. The door panel adopts double-layer tensile aluminum plates of 0.7mm thick and is one-step modeled by the assembly line. The middle section is foam filled by polyurethane, with a capacity equal to or greater than 50 kg per cubic space (excluding CFC), and the total thickness of the door plate is 43mm. The cross section design adopts heat insulating structure and has the advantages of heat insulation, light in weight, high strength, and impact resistance and so on. The classification of wind resistance is equal to or greater than force 12 wind. The application of this door will save the company a great quantity of production energy consumption caused by air circulation. Our product is very reliable, practical, easy-operating and quick-fixing. The drive system has adopted stable, energy-saving and accurate servo-system to ensure reliable operations.

产品标准配置

STANDARD CONFIGURATION

- ★ 停电应急开启装置 Emergency starting device while power off
- ★ 红外线安全保护系统 Infrared safety protection system
- ★ 操作按钮盒 Operating button box
- ★ 接触触发式安全底边 Contact belt triggering-type safety bottom
- ★ 伺服电机 Servo motor
- ★ 专业控制系统 Professional control system



电机系统 MOTOR SYSTEM

电机驱动系统采用工业门伺服电机系统:瑞士永磁同步电机;台湾品牌编码器;英国品牌刹车系统;大惯量行星减速机;应急手动开启结构。

The motor drive system adopts industrial door servo motor system; rare earth permanent magnet synchronous motor; Taiwan brand encoder; British brand brake system; Large inertia planetary reducer; Emergency manual opening structure.

提升方式 HOISTING WAYS

该门的铝合金涡轮导向承重轨道，确保门帘在启闭过程的高速运行，门帘与轨道转动摩擦使噪音有效控制，根据现场安装结构可分为涡轮吸入式、椭圆吸入式、垂直提升式、90度标准拐弯提升式或更多的轨道方式，标准为涡轮吸入式，其它提升方式需要和我司销售人员提前预约。

The door curtain is a split assembly structure: aluminum alloy door panel with broken bridge heat insulation and multi-level sealant. The utility model is composed of a silencing load-bearing hinge, a polyurethane guide wheel, etc. Aluminum alloy insulation. The standard thickness of the door panel is 43mm, and the surface is anodized and organic coloring treatment, which is resistant to corrosion. The wind intensity can reach grade 12, and the interior is filled with polyurethane industrial thermal insulation material. The standard color is gray. Available in 4 colors: aluminum alloy primary color, pearl white and Chinese red.

开关速度 OPEN-CLOSE SPEED

开启速度1.2M/S~2.5M/S;可调;关闭速度0.6M/S,可调。

Opening speed 1.2m/s ~ 2.5m/s, adjustable; Closing speed 0.6m/s, adjustable.

门体结构 DOOR STRUCTURE

门帘为分体装配结构:断桥隔热的铝合金门板、多层次密封胶条、消音承重铰链、聚氨酯导向轮等几个部分组成。铝合金保温门板标准厚度为40mm,表面经过阳极氧化加有机着色处理,抗风强度可达12级,内部填充聚氨酯工业保温材料,标准颜色灰色、可选颜色铝合金原色、珍珠白、中国红4种。

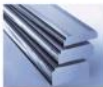
The door curtain is a split assembly structure: aluminum alloy door panel with broken bridge heat insulation and multi-level sealant. The utility model is composed of a silencing load-bearing hinge, a polyurethane guide wheel, etc. Aluminum alloy insulation. The standard thickness of the door panel is 43mm, and the surface is anodized and organic coloring treatment, which is resistant to corrosion. The wind intensity can reach grade 12, and the interior is filled with polyurethane industrial thermal insulation material. The standard color is gray. Available in 4 colors: aluminum alloy primary color, pearl white and Chinese red.



涡轮 Turbine



红外线 Infrared photoelectric



门板 Door plank

安全系统 SAFETY SYSTEM

红外线安全保护电眼:门框两侧设有对射电眼,快速下方有障碍物时,门体保持开启状态当门体下降时有物体通过,门体会开启到开启位置,待下方无障碍物时再延时下降。可利用外接红外线装置,来控制门的快速反弹。可通过参数的修改来简便的设置反弹速度。也可通过修改参数来决定红外线装置的功能定义,例如碰红外时,是单次起作用反弹还是长期使门不动超等功能,都能通过修改参数来决定。

Electric eye protected by infrared ray safely:there are correlation electric eyes on both sides of door frame.When there are the barriers below the fast door, the door remains the opening status:when the door drops, there are the objects to pass through it, the door can be opened up to the opening location. When there are not the barriers undeneath, drop it in delay.The externally-connected infrared ray device can be employed to control the rapid rebounding.The modification of parameters can be employed to simply set the rebounding speed, the parameters can also be modified to decide the functional definition of infrared device, for example, encountering with the infrared ray, whether the single functional rebounding or the long-term non-rebounding of door functions can be decided by modifying the parameters

底部安全保护边:当门体在下降时,由于物体处在红外线安全保护的盲区时,门体压在下方障碍物时,门体迅速反弹在最开门,有效的保护下方物体或行人避免事故。

Edge protected safely at the bottom: when the door drops, since the object are located in the blind area safely protected by the infrared ray, when the door is pressed under the barriers below, the door is rebounded up to the largest opening rapidly to effectively protect the objects or pedestrians below and avoid the accidents



抗风能力 ANTI-WIND CAPABILITY

32m/s(国际抗风等级12级)
32m/s(Grade 12 for national standard anti-wind grade)

透明视窗 TRANSPARENT WINDOWS

优质的聚碳酸酯板, 双层结构的设计既能保证门体内外的保温效果, 又保持了良好的透明性及采光效果, 其内外清晰可见, 外观彰显档次。

High-quality polycarbonate sheet, the design with double-layer structure not only ensures the heat preservation effect for internal and external door but also remains the good transparency and lighting effect, the inner and outer are distinct and visible, the appearance shows the level.

保温性能 INSULATION PERFORMANCE

对于已安装的关闭状态的门(4x3m)保温性能 $K < 1.5W/(m^2K)$

For the door that has been installed and is in closing status(4x3m)with $K < 1.5W/(m^2K)$ for heat preservation

电源要求 REQUIREMENT OF POWER SUPPLY

380V/14A/50Hz/.

KJM快速卷帘门 (国标最高900CJ17)

KJM HIGH SPEED DOOR

快速卷帘门被设计用于有不同环境要求区间之间的隔断与快速开闭, 以起到隔断空气流通和保障快速通行的作用。是设置在建筑物内外出入口, 用软帘做成的快速自动卷帘门。由于开、关门速度快, 缩短了出入口的开放时间, 减少了不同区间之间的空气对流和热能交换, 对于创造安全、卫生和节能的工作环境有很大的作用。广泛适用于汽车制造、医药、电子、洁净厂房、净化车间、卷烟、印刷、纺织、超市、机械制造等需要快速开闭的通行门洞口。

The fast soft curtain rolling door is designed for partition and fast opening and closing between sections with different environmental requirements, so as to play the role of partition Cut off air circulation and ensure rapid passage. It is a fast self-propelled curtain made of soft curtain, which is set at the entrance and exit of the building Move the rolling shutter door. Due to the fast opening and closing speed, the opening time of the entrance and exit is shortened and the empty space between different sections is reduced Air convection and heat energy exchange play a great role in creating a safe, hygienic and energy-saving working environment. Widely applicable to Automobile manufacturing, medicine, electronics, clean workshop, purification workshop, cigarette, printing, textile, supermarket, machinery manufacturing, etc Access door opening requiring quick opening and closing.

主要技术参数

MAIN TECHNICAL PARAMETERS

适用门洞 Applicable door opening

最大宽度 Madmum width 8000
最大高度 Maximum heiaht 8000

使用寿命 Service lfe
>50万次

抗风压 Resistance to wind pressure
160N/m²

门帘厚 Thickness of door aurtain
0.8mm

启闭速度 Opening and closing speed
0.6-1.2m/s

启闭频率 Opening and closing frequenc
60次/h

工作电压/频率 Working voltage M frequency
380V、220V/50HZ

功率 Motor power
0.75KW-1.6KW

铝下横梁
外形美观, 带抗风防撞自锁装置
Aluminium botom
Beautiful appearance,
windproof, anti-collision
with self-derailing device



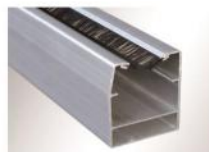
门帘材料性能 Materials and property of door curtain

序号 Number	项目 Project	指标 Indicators
1	厚度 Thickness (mm)	0.8
2	质量 Quality (g/m ²)	830-900
3	抗拉强度 Tensile strength (N/300mm)	2100-2500
4	延伸率 Elongation (%)	<25
5	撕裂强度 Tear strength N	>280
6	耐热性 Heat resistance (C)	70
7	耐寒性 Cold tolerance (C)	-20
8	耐水压 Resistance to water pressure (mm HzO)	5 >2x10
9	耐磨耗性 Abrasion resistance	4.9Nx100
10	耐揉性 Mixing tolerance	9.8Nx1000
11	耐燃性 Flame resistance	离火5S自动熄灭 From 5s automatic fire extinguishing

结构特点 Structure and characteristics

1. 轨道、下过梁、抗风条全部采用优质铝合金型材制作，外型美观。
2. 采用伺服电机和伺服控制，编码器限位，门体运行平稳，关门开门转换速度快小于0.3S，且无一般制动电机的刹车噪声，运行几十万次，限位误差小于2mm。
3. 设有无线安全气囊、红外保护系统，在门体下行时遇人、物迅速回到全开状态。安全性好。
4. 防撞脱轨保护。
5. 可根据用户要求，选配地磁环或拉绳开启。

1. Rail, lower beam and windproof strip are manufactured with high-quality aluminum alloy profiles with beautiful shape
2. Use servo motor, servo control and encoder limit. The door body operates stably. The switch speed of closing and opening is fast, to be specific, less than 0.3 S, and generally no noise of motor braking occurs. Upon operations of hundreds of thousands of times, the limit error is less than 2 mm
3. Be equipped with wireless safety air bag and infrared protection system. Return quickly to fully open state in the event of people or objects when the door body is moving down. Have good safety performance.
4. Anti-collision derailing protection
5. Geomagnetic loop or pull a rope for opening is an option in terms of the users' requirements.



铝合金导轨
壁厚3mm
Aluminum alloy guide rail
3 mm in wall thickness



铝合金抗风条
Aluminum alloy windproof strip



帘布颜色
多种选择
Color of curtain
Multiple options



伺服电机
运行平稳
Servo motor
Operating stably



伺服控制箱
Servo control box



SDM软帘堆积门 (国标图集号04CJ02)

SDM SOFT CURTAIN STACKING DOOR

软帘上叠门主要有立柱、轨道、上下过梁、帘布固定架、帘布、绳轮、提升机构、安全保险机构、控制系统等部件组成。其中过梁和帘布固定架采用优质型钢制造，帘布选用高强度PVC帘布。当提升机构工作时，提升机上的钢丝绳驱动下过梁上移，将帘布固定架和帘布叠加在下过梁上，开启到位后，由上行限位开关限位。当提升机构反向运动，下过梁下移，实现门体的关闭。在关门到位时，由布设在绳轮上的行程限位开关限位。在门体运行过程中，如出现钢丝绳断裂，安全保险机构作用，防止门体坠落。控制采用PLC变频控制变频，门体在运行过程中，缓启缓停。主要适用于船厂，大型车间，飞机库等场所。

The upper folding door with soft curtain mainly includes the post, rail, upper and lower beams, curtain fixing frame, curtain, rope pulley, lift mechanism, safety mechanism, and control system etc. Among which the beams and the curtain fixing frame are manufactured by the high-quality profiled bar, and the curtain shall be the high-strength PVC curtain. When the lift mechanism works, the wire rope on the lift mechanism will drive the lower beam to move upwards, so as to overlap the curtain fixing frame and the curtain on the lower beam. When the door is opened to the appointed place, it will be limited by the upper travel limit switch. When the lift mechanism moves reversely, the lower beam moves downwards, so as to realize the closing of the door body. When the door is closed to the appointed place, it will be limited by the travel limit switch arranged on the rope pulley. When the door moves, if the wire rope breaks, the safety mechanism will work to prevent the falling of door body. PLC frequency conversion control is adopted for control. The door will start and stop slowly during the moving process. The upper folding door with soft curtain is mainly applicable to such occasions as shipyard large scale workshop and hangar.

主要技术参数

MAIN TECHNICAL PARAMETERS

适用门洞	Applicable door opening
最大门洞宽 B=42000 (超宽的可特殊设计)	Maximum door opening width B=42000 (extra wide can be specially designed)
最大门洞高 A=17000 (超高的可特殊设计)	Maximum door opening height A=17000 (super high can be specially designed)
工作电压/频率	Working voltage/frequency
380V/50HZ	
电机功率	Motor power
3.2KW-13KW	
开门速度	Opening speed
≤0.15m/s	
门体最大抗风压	Maximum resistance to wind pressure of door body
650N/m ²	
门体厚	Thickness of door panel
450-800	
控制箱防护等级	Protection grade of control box
Ip54	
外置按钮防护等级	Protection grade of external button
Ip64	



韩通24m×10m柔性上叠门
24m×10m flexible upper folding door of Moring



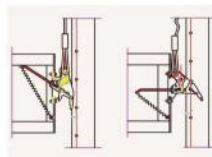
上叠门行程限位开关

Travel limit switch of upper folding door



上叠门PLC变频控制箱

PLC frequency conversion control box of upper folding door



保险自锁机构

专利号ZL201220168051.1
Soft locking mechanism of door frame
Patent No. ZL201220168051.1



装卸货系统

DOCKING SYSTEMS

电动液压卸货平台，选用先进的液压系统，采用优质型钢做骨架，经精密的机械加工和先进的组焊工艺，构成了高强度的作业平台。它的高差调节功能使库房和货车之间架起一座桥梁，以帮助实现平稳、安全、高效的装卸货要求。

For electric hydraulic unloading platform, a high-strength operation platform is formed through delicate mechanical processing and advanced assembling and welding technology by taking the advanced hydraulic system and the high-quality profiled bar as frame. Its height difference adjustment function allows building a bridge between warehouse and truck to help to realize the requirements for loading and unloading stably, safely and efficiently.



圆角过渡
Arc transition



平台面板
Platform top plate



护脚板
Toe guard



平台底部框架
Platform bottom frame

主要技术参数

MAIN TECHNICAL PARAMETERS

工作电压/频率 Working voltage/frequency

380V/50HZ

宽度 Width

1800-2500

长度 Length

2000-3000

动载 Dynamic load

6-12T

适用温度 Applicable temperature

-40°C~50°C

电动液压系统 Electro hydraulic system

舌板与车厢始终紧密连接，确保装卸作业的平稳
The tongue plate has been closely connection with the compartment to ensure stable loading

两侧防切割保护 Anti-cutting feet protection on both sides

附设检修安全撑杆 Attached-maintenance safety brace

维修支撑杆
Service support rod

三种形式门封

THREE TYPES OF DOOR SEAL



机械式门封

Mechanical door seal

也叫帘式门封，由加强型聚酯纤维制成，适用于一般密封要求。一定车型范围的装卸货场合。

Mechanical door seal, also known as curtain door seal, is manufactured by enhanced polyester fiber. It is applicable to loading and unloading occasions for ordinary sealing requirement and scope of a certain vehicle types.



垫式门封

Cushion door seal

由优质海绵外表皮革制成，正表面缝制帘布，密封效果较长久耐用，适用于车型相对固定的装卸货场合。

Cushion-style door seal: made by high-quality sponge by wrapping leather. Sew shutter curtain in the front surface. Owing to its good sealing effect and durability, it is applicable to loading and unloading occasions for relatively fixed vehicle types.



充气式门封

Inflatable door seal

由气囊及充气系统组成，密封效果最好，适用于食品、制药、电子等有较高密封要求的装卸货场合，有一定的车型适用范围。

Inflatable door seal: composed of air bag and inflation system. It has the best sealing effect and applicable scope of a certain vehicle types. It is applicable to loading and unloading occasions for food pharmacy, electronics, etc., raising higher sealing requirement.

TLM推拉门

TLM INDUSTRIAL SLIDING DOOR

车间推拉门是一种门扇向门洞一侧或两侧移动,实现门扇开启的一种门型。它适用于车间、仓库、物流中心等场所用门。该门有上承重式和下承重式二种承重形式,单向开启和双向开启二种开启形式,门扇外框有型钢、铝合金、不锈钢三种,门扇有聚苯乙烯夹心板和聚氨酯夹心板二种门板供用户选择,开门传动机构选用电机一体化技术生产的开门机,设有手电动转换离合器。方便停电时启闭门扇。门洞周边密封采用三元乙丙橡胶密封条密封,密封性能好。

Industrial sliding door for workshop is one kind of door whose door leaf is moved towards one side or two sides of the door opening to realize the opening of door leaf. It is applicable to such occasions as workshop, warehouse and logistics center. Such door has two bearing manners, namely upper bearing type and lower bearing type, and two opening methods, namely one-way opening and double-way opening. The outline border for door leaf has three kinds of materials, including profiled bar, aluminum alloy and stainless steel. As for door leaf, there are two kinds of door panels including polystyrene sandwich panel and polyurethane sandwich panel to be selected by the users. The door-opening drive mechanism adopts the door-opening machine manufactured by us using electromechanical integration technology and is provided with manual-electric switching clutch which is convenient to open and close the door leaf during power failure. EPDM rubber strip is used for sealing the surrounding place of the door opening, with a good sealing performance.



主要技术参数

MAIN TECHNICAL PARAMETERS

适用门洞	Applicable door opening
最大门洞宽 B=30000	
最大门洞高 A=12000	
Maximum door opening width B=30000	
Maximum door opening height A=12000	
洞口上沿预留尺寸	Reserved size for upper edge of opening
≥470	
工作电压/频率	Working voltage/frequency
380V/50HZ	
电机功率	Motor power
n×0.68KW	
运行速度	Operating speed
≈0.15m/s	
门体最大抗风压	Maximum resistance to wind pressure of door body
650N/m ²	
门板厚	Thickness of door panel
40-100mm	
适应温度	Applicable temperature
-40°C~50°C	



地轮 上导向轮
Land wheel upper guide wheel



抗风卷帘门

WINDPROOF ROLLING SHUTTER

抗风卷帘门主要由帘片、抗风轮、抗风轨道、开门传动机构等部件组成。帘片内层为聚氨酯发泡材料，跟普通的帘片相比具有保温、隔热、隔音、美观等优点。在帘片两端装有抗风轮，在开启和关闭时，抗风轮在抗风轨道中运行，当有风载时抗风轮拉住帘片，以防止帘片脱轨，起到抗风的作用。该门广泛适用于各种类型的车间、仓库等。

Windproof rolling shutter is made up mainly by wind shutter curtain, windproof wheel, windproof rail door-opening drive mechanism and other components. Compared with ordinary shutter curtain, such shutter curtain, whose inner layer is made by polyurethane foam sheet, has the advantages of heat preservation, heat insulation, sound insulation, beauty, etc. On both ends of the shutter curtain, windproof wheels are installed. The windproof wheels operate in the windproof rail in the process of opening or closing; it holds on to the shutter curtain to prevent the shutter curtain from derailing and play a role of resistance to wind in the event of wind load. Such door is widely applicable to workshops and warehouses of all types, and so forth.

主要技术参数

MAIN TECHNICAL PARAMETERS

适用门洞	Applicable door opening
最大门洞宽 B=12000 最大门洞高 A=10000 Maximum door opening width B = 12000 Maximum door opening height A = 10000	
洞口上沿预留尺寸	Reserved size for upper edge of opening
500-1000	
门洞侧边各预留	Reserved size for each lateral of opening
≥300	
工作电压/频率	Working voltage/frequency
380V/50HZ	
电机功率	Motor power
550W-1100W	
运行速度	Operating speed
≈0.17m/S	
门体最大抗风压	Maximum resistance to wind pressure of door body
650N/m ²	
帘片宽	Width of Shutter Curtain
40-100mm	
适用温度	Applicable temperature
-40°C~50°C	

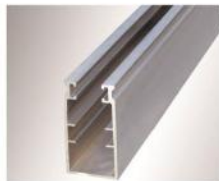
100 聚氨酯发泡门板，保温、隔热、隔音
100 polyurethane foaming door panel available for heat preservation, heat insulation and sound insulation



抗风卷帘专利号:ZL201220167671.3

在有风载的情况下，抗风轮拉住抗风轨道，防止帘片脱轨，起到抗风作用

Windproof rolling shutter Patent No.: ZL201220167671.3 In the event of wind load, the windproof wheel holds on to the windproof rail to prevent the shutter curtain from derailing and play a role of resistance to wind.



抗风轨道

根据用户需求可选配铝合金或型钢材

Windproof rail Aluminum alloy or profiled bar material is an option in terms of the users' demand.



滚动支撑(卷帘门自动调整机构)

专利号:ZL201220168038.6

卷帘门在开启关闭时，滚动支撑自动调整门体和轨道的相对位置，减少了阻力，延长使用寿命

Rolling support (automatic adjustment mechanism of rolling door) Patent No.: ZL201220168038.6 When opening or closing the rolling door, the rolling support makes automatic adjustment of the relative positions of the door body and the rail, hence reducing the resistance and extending the service life of the door.

CZM侧专门 (国标准号04CJ02)

SIDE REVOLVING DOOR

该电动侧转门，有上承重下导向和下承重上导向两种承重形式，该侧转门主要由上下导轨、上下导向轮、门扇、铰链、周边密封条、开门传动机构、电控系统等部件组成。其中门扇采用铝合金型材或专用型钢做外框，门板采用聚氨酯发泡门板，电控采用集成电路控制，门扇和门扇之间采用铰链连接，门扇的下部装有下导向轮，在下导轨中滚动，当开门传动机构工作时，牵引门体向90°方向侧转，实现门扇的开启。反向门扇关闭。门体到位后有行程限位开关限位。主要适用于战斗机、直升机等。

The electric side revolving door is in two bearing forms, one is upper-bearing and lower-guiding and the other is lower-bearing and upper-guiding. The side revolving door mainly includes the upper and lower guide rails, upper and lower guide wheels, door leaves, hinge, surrounding seal strip, door-opening drive mechanism, electric control system and so on, among which the door leaf has the outline frame manufactured by aluminum alloy sections or special profiled bar, the door panel is polyurethane foaming door panel, the electronic control is integrate circuit control, and the door leaves are connected with each other through the hinge. The lower part of the door leaf is provided with lower guide wheel which rolls in the lower guide rail. When the door-opening drive mechanism works, it will drive the door body to revolve along the 90° direction, so as to realize the opening of door leaf, and the door leaf will be closed when in reverse direction. When the door body arrives at its appointed place, it will be limited by the travel limit switch. The electric side revolving door is mainly applicable to warplane, helicopter, etc.

主要技术参数

MAIN TECHNICAL PARAMETERS

适用门洞	Applicable door opening
最大门洞宽 B=27000	Maximum door opening width B = 27000
最大门洞高 A=8100	Maximum door opening height A = 8100
洞口上沿预留尺寸	Reserved size for upper edge of opening
≥300	
门洞侧边各预留	Reserved size for each lateral of opening
≥300	
洞口出深尺寸	Depth size of opening
门洞宽/2+1500	
工作电压/频率	Working voltage/frequency
380V/50HZ	
电机功率	Motor power
550W	
运行速度	Operating speed
≈0.17m/s	
门板厚	Thickness of door panel
50mm	
系数	Coefficient
K<0.8W/m ² .K	
隔音性能	Sound insulation property
23db	

门体最大抗风压	Maximum resistance to wind pressure of door body
450N/m ²	
适应温度	Applicable temperature
-40℃~50℃	



CZM侧转门--是战斗机、直升机等库用门的理想选择
CZM side revolving door - ideal choice for warplane hangar door and helicopter hangar door



飞机库大门 (国标图集号04CJ02)

HANGAR DOOR

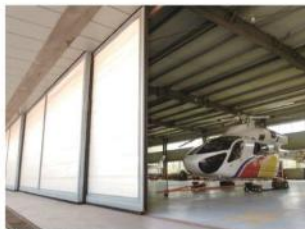
该大门采用下承重，上导向结构，大门开启后多扇重叠在门洞两侧。主要适用于飞机机库及大型车间。大门门扇采用型钢骨架，面板采用宝钢产压型彩板、无氟环保型聚氨酯发泡板、聚碳酸酯阳光板三种板型供用户选择。开门机采用机电一体化装置，采用PLC变频控制。行程限位采用光电感应无接触限位。在开门过程中有声光报警警示。红外探测遇阻即停功能。如遇停电可转换到手动开启状态。

Such door is in a lower-bearing and upper-guiding structure. The door will overlap on two sides of the door opening after opening. It is mainly applicable to hangar and large-scale workshop. For the door leaf, profiled bar is used as frame. For the panel, profiling colorful plate produced by BaoSteel fluoride-free environmental polyurethane foaming panel and polycarbonate sunshine panel can be selected by the users. For the door-opening machine, electromechanical integration device and PLC frequency conversion control are used. For the travel limit, photoelectric induction non-contact limit is adopted. The caution of sound-light alarm is found in the process of opening the door. Infrared detection stops in the event of an obstruction. It can be switched to manual opening state in the event of power failure.

主要技术参数

MAIN TECHNICAL PARAMETERS

适用门洞	Applicable door opening
最大门洞宽 B=100000	
最大门洞高 A=22000	
Maximum door opening width B=100000	
Maximum door opening height A=22000	
洞口上沿预留尺寸	Reserved size for upper edge of opening
≥1000	
门洞侧边预留	Reserved size for each lateral of opening
≥门扇宽+500	
工作电压/频率	Working voltage/frequency
380V/50HZ	
电机功率	Motor power
n×1.5-3KW (n为主动门扇扇数)	(n represents the number of active door leafs)
运行速度	Operating speed
≈0.17m/s	
门体最大抗风压	Maximum resistance to wind pressure of door body
650N/m ²	
门板厚	Thickness of door panel
200-530	
适应温度	Applicable temperature
-40°C~50°C	



中国华西村直升飞机库门
Helicopter hanger door in Huaxi village, China



厦门海流飞机库大门
Hanger door in Xiamen Seaside



菲律宾机场大门
Hanger door in Xiamen Seaside Philippine Airport door

低温快速门

LOW TEMPERATURE FAST DOOR

低温冷库快速门是主要应用于智慧民生工程项目。公司将伺服技术、传感技术、通讯技术有机结合，使冷库门产品智能化、科技化、数字化、模块化、人性化，在确保安全、稳定运行的前提下，着力于提供保鲜库、冷冻库、冷冻物流通道的节能解决方案。致力于协助冷链物流企业提高冷库区域的工作效率、节约能源运营成本。

Low temperature cold storage fast door is mainly used in smart people's livelihood project. The company organically combines servo technology, sensing technology and communication technology to make cold storage door products intelligent, scientific, digital, modular and humanized. On the premise of ensuring safe and stable operation, the company focuses on providing energy-saving solutions for fresh-keeping warehouse, freezer and refrigeration logistics channel. It is committed to assisting cold chain logistics enterprises to improve the work efficiency of cold storage area and save energy and operation costs.



保温门帘
Thermal insulation curtain



冷库专用伺服电机
Special servo motor for cold storage



销售网络

SALES NETWORK

